

# MD HD EASY LOOP

122011

- ES Manual de usuario
- FR Manuel d'installation
- IT Manuale d'uso
- PT Manual d'instruções
- EN User's manual



EKSELANS BY ITS



EKSELANS BY ITS

ES Conexiones

FR Connexions

IT Connessioni

PT Conexões

EN Connections



Front programming buttons

RF Out

RF In



DC Input

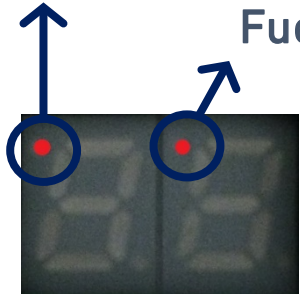
USB (Prog.)

HDMI Input

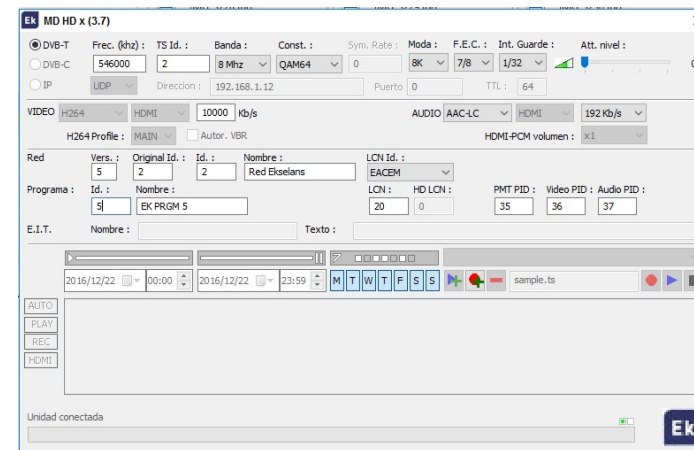
HDMI Output



Alimentación eléctrica conectada  
Fuente HDMI detectada



- Presionar ▲ / ▼ para menú canal, atenuación e identificador de programa
- Presionar ENTER + ▲ / ▼ para fijar canal de salida [5...12 + 21...69]
- Presionar ENTER + ▲ / ▼ para fijar la atenuación deseada [0...15 dB]
- Presionar ENTER + ▲ / ▼ para modificar el identificador de programa
- Presionar ▲ mientras se conecta la alimentación para valores por defecto. Aparecerá "rs".
- Para programación avanzada, descargar el SW "*EK\_MDHDSoff*" de la web [www.ekselansbyits.com](http://www.ekselansbyits.com) y conectarlo al ordenador con cable USB (Tipo A/ Tipo B).

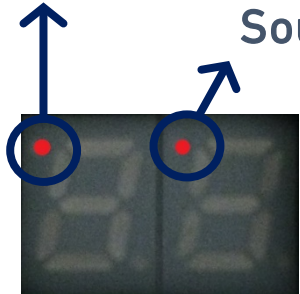


- **Nota:** En el caso de usar más de un modulador para el mismo receptor o televisor, es necesario modificar el "Program ID" (Identificador de programa), para que sean distintos.

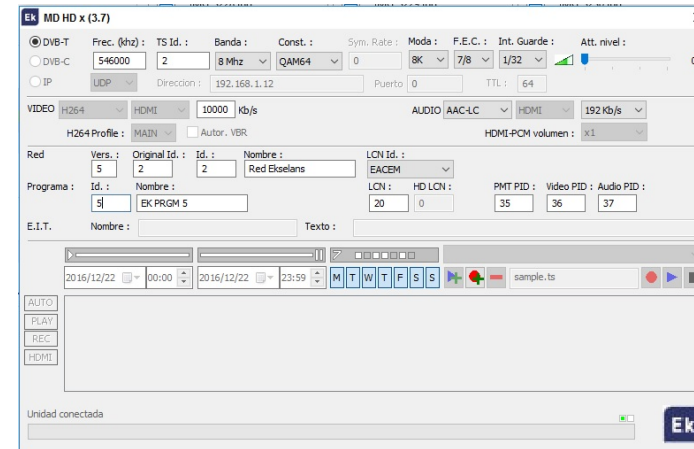


Alimentation connecté

Source HDMI détectée



- Appuyez en ▲ / ▼ pour menu canal / réglage niveau / id. programme
- Appuyez sur ENTER + ▲ / ▼ en pour régler le canal de sortie [5...12 + 21...69]
- Appuyez sur ENTER + ▲ / ▼ en pour régler l'atténuation souhaitée [0 ... 15dB]
- Appuyez sur ENTER + ▲ / ▼ en pour régler l'identificateur de programme
- Apuyyez sur ▲ lorsque l'alimentation est connecté avec valeurs par défaut
- Pour la programmation avancée, téléchargez le SW "*EK\_MDHDSof*t" [www.ekselansbyits.com](http://www.ekselansbyits.com) et le connecter à l'ordinateur avec un câble USB (Type A / Type B).

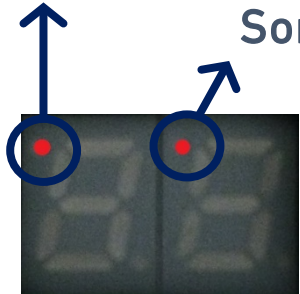


- **Note:** En cas d'utilisation de plus d'un modulateur pour le même récepteur ou téléviseur, il est nécessaire de modifier "Program ID" (Identificateur de programme) pour qu'il ait des valeurs différentes.

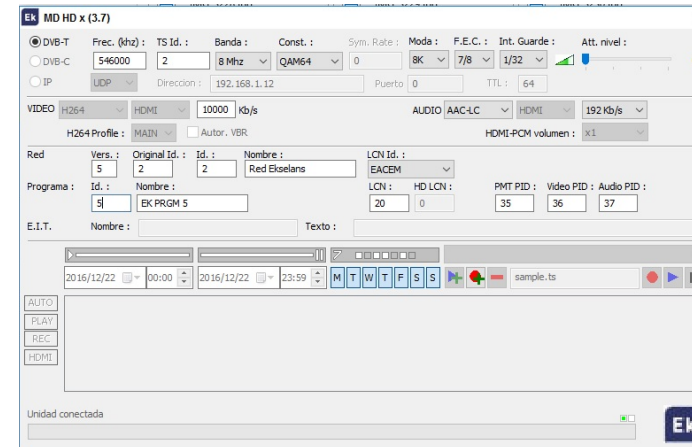


Alimentatore collegato

Sorgente HDMI collegata



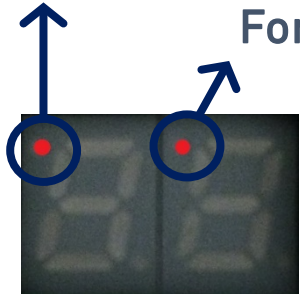
- Premere verso ▲ / ▼ per accedere al menu Canale / Attenuazione / Identificatore di programma
- Premere ENTER + ▲ / ▼ per scegliere il canale di uscita [5...12 + 21...69]
- Premere ENTER + ▲ / ▼ per scegliere l'attenuazione del livello di uscita [0...15dB]
- Premere ENTER + ▲ / ▼ per modificare il identificatore di programma
- Per fare un reset del modulatore, premere il tasto ▲ mentre è collegato l'alimentatore. Comparirà "rs" sul display.
- Per una programmazione avanzata, scaricare il SW "*EK\_MDHDSof*t" dal nostro sito web [www.ekselansbyits.com](http://www.ekselansbyits.com). Poi collegare il modulatore al PC tramite un cavo USB (tipo A / tipo B).



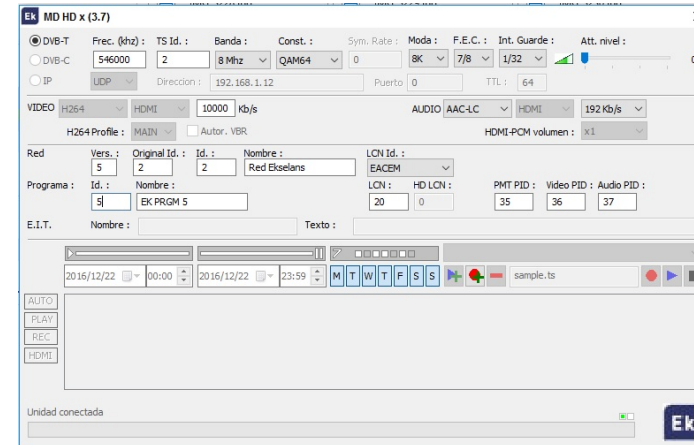
- **Nota:** Nel caso di utilizzare più di un modulatore nello stesso impianto, è necessario modificare il "Program ID" (Identificatore di programma), dovendo essere diverso per ogni modulatore.



Alimentação eléctrica conectada  
Fonte HDMI detectada



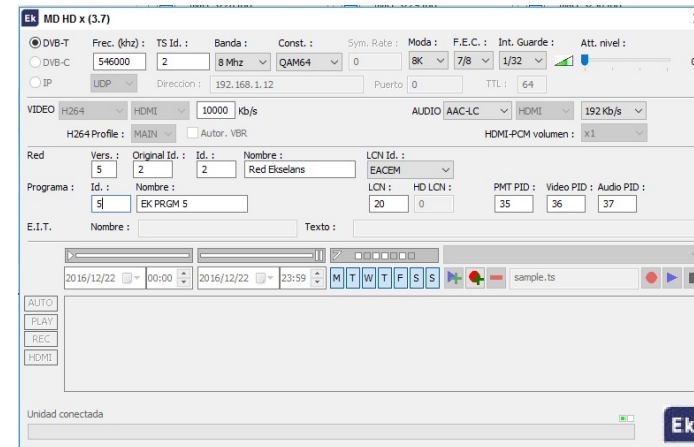
- Pressionar ▲ / ▼ para menu canal / atenuação / identificador de programa
- Pressionar ENTER + ▲ / ▼ para fixar canal de saída [5...12 + 21...69]
- Pressionar ENTER + ▲ / ▼ para menu atenuação desejada [0...15dB]
- Pressionar ENTER + ▲ / ▼ para modificar o identificador de programa
- Pressionar ▲ enquanto liga a alimentação para voltar aos valores por defeito. Aparecerá "rs".
- Para programação avançada, descarregar o software "*EK\_MDHDSof*t" da web [www.ekselansbyits.com](http://www.ekselansbyits.com). Interligue o modulador com PC através de um cabo USB (Tipo A/ Tipo B).



- **Nota:** No caso de usar mais de um modulador na mesma instalação, é necessário modificar o "Program ID" (identificador de programa), para serem distintos.

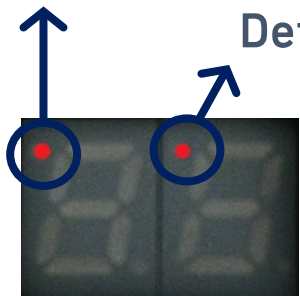


- Press ▲ / ▼ to access the output channel menu / attenuation / program ID
- Press ENTER + ▲ / ▼ to set the output channel [5...12 + 21...69]
- Press ENTER + ▲ / ▼ to set the desired attenuation [0...15dB]
- Press ENTER + ▲ / ▼ to modify the Program Id.
- Press ▲ while connecting the power supply Factory default values. “rs” will appear on the display.
- For advanced settings, download the SW “*EK\_MDHDSofT*” from the website: [www.ekselansbyits.com](http://www.ekselansbyits.com) and connect the modulator to the computer by using a Type A / Type B USB cable.



PSU connected

Detected HDMI source



- **Note:** In case of using more than one modulator for the same receiver or TV set, it is necessary to modify the “Program ID” so that they have different values.



EKSELANS BY ITS

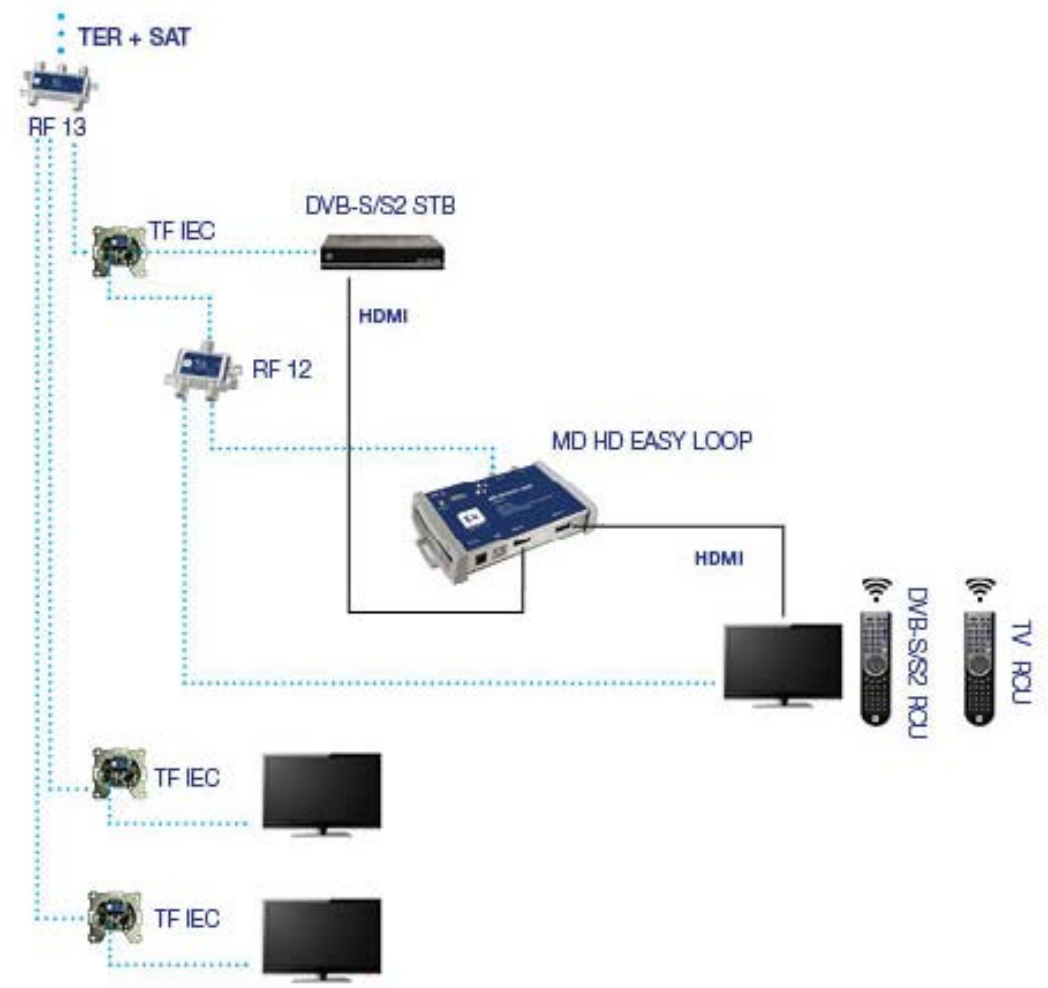
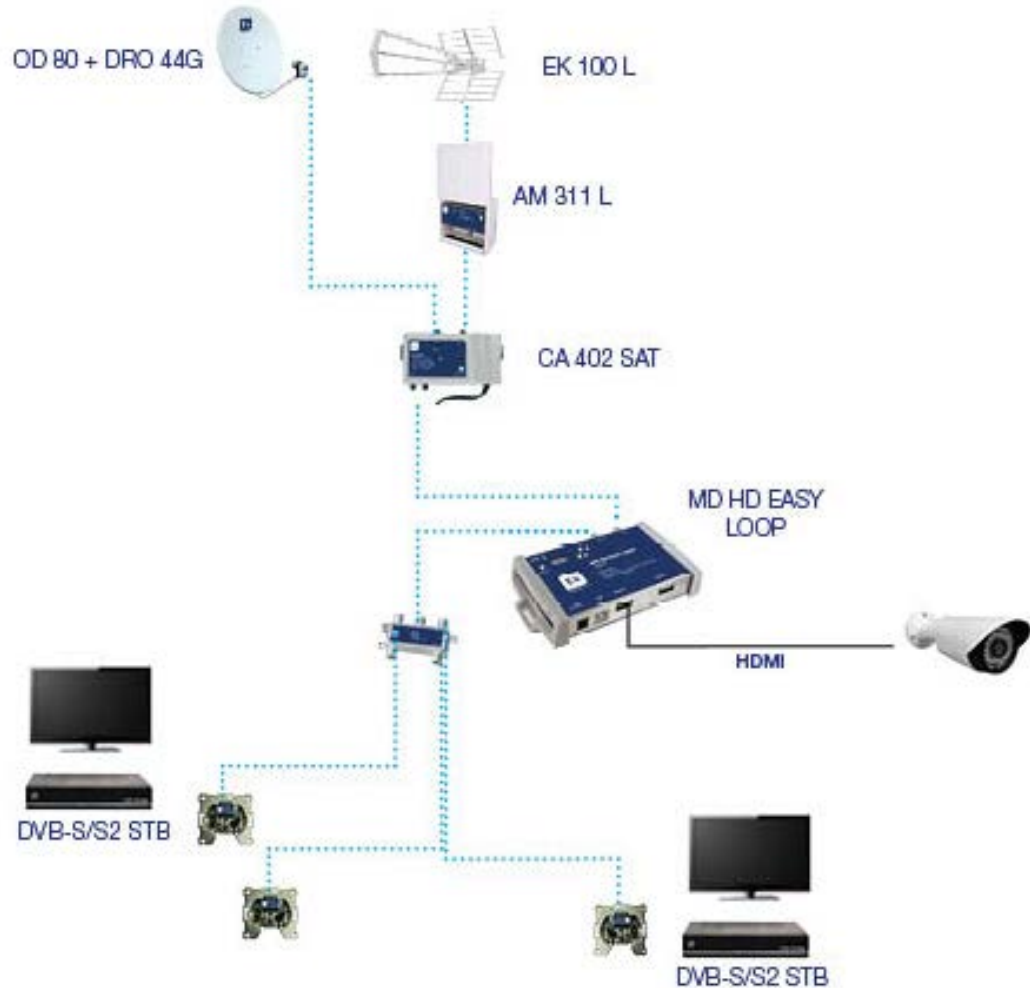
ES Esquemas de instalación

FR Diagramme de montage

IT Schema di montaggio

PT Esquema de instalação

EN Installation schemes





REFERENCIA	RÉFÉRENCE	ARTICOLO	REFERÊNCIA	REFERENCE		MD HD EASY LOOP
Código	Code	Codice	Código	Code		122011
ENTRADA HDMI	ENTRÉE HDMI	INGRESSO HDMI	ENTRADA HDMI	HDMI INPUT		
VÍDEO	VIDÉO	VIDEO	VÍDEO	VIDEO		
Resolución de vídeo	Résolution vidéo	Risoluzione video	Resolução de vídeo	Video resolution		480p - 576p - 720p - 1080i - 1080p
Compresión de vídeo	Compression vidéo	Compressione video	Compressão de vídeo	Video compression		H.264
Vídeo rate	Video rate	Video rate	Video rate	Video rate	Kbps	500-15000
AUDIO	AUDIO	AUDIO	AUDIO	AUDIO		
Compresión de audio	Compression audio	Compressione audio	Compressão de audio	Audio compression		MPEG1-L2, AAC-LC
Audio rate	Audio rate	Audio rate	Audio rate	Audio rate	Kbps	128, 192, 256, 320, 384
SALIDA HDMI	SORTIE HDMI	USCITA HDMI	SAÍDA HDMI	HDMI OUTPUT		LOOP
MODULACIÓN	MODULATION	MODULAZIONE	MODULAÇÃO	MODULATION		
Procesado DVB	Traitement DVB	Elaborazione DVB	Processamento DVB	DVB processing		NIT, PID
Configuración DVB	Réglages DVB	Impostazioni DVB	Configurações DVB	DVB adjustments		NID, ONID, Network ID, Network name, TS ID, Program ID, Program name, PMT PID, Video PID, Audio PID
Frecuencia de salida	Fréquence de sortie	Frequenza di uscita	Frequência de saída	Output frequency	MHz	170-230 & 470-862
Canal de salida	Canal de sortie	Canale di uscita	Canal de saída	Output channel	N.	5...12 + 21...69
Nivel de salida	Niveau de sortie	Livello di uscita	Nível de saída	Output level	dBµV	>80
Atenuación	Atténuation	Attenuazione	Atenuação	Attenuation	dB	0...15
MER	MER	MER	MER	MER	dB	≥33
Ancho de banda	Largeur de bande	Intervallo di frequenze	Banda de frequências	Bandwith	MHz	6, 7, 8
Constelación	Constellation	Costellazione	Constelação	Constellation		QPSK, 16QAM, 64QAM
Modo	Mode	Modo	Modo	Mode		2K, 8K
FEC	FEC	FEC	FEC	FEC		1/2, 2/3, 3/4, 5/6, 6/7
Intervalo de guarda	Intervalle de garde	Intervallo di guardia	Intervalo de guarda	Guard interval		1/4, 1/8, 1/16, 1/32
LCN	LCN	LCN	LCN	LCN		EACEM, ITC, NORDIG
Loop RF	RF loop	RF loop	RF loop	RF loop	dB	-2
GENERAL	GÉNÉRAL	GENERALI	GERAL	GENERAL		
Tensión de alimentación	Tension d'alimentation	Tensione di alimnetazione	Tensão de alimentação	Voltage	Vdc	5
Consumo de potencia	Consommation électrique	Consumo energetico	Conumo de energia	Power consumption	W	<10
Tamaño	Dimensions	Dimensione	Tamanho	Dimensions	mm	153 x 96 x 34

	Channel	Srtar Freq.	End Freq.	Video Carrier	Central Freq.		Channel	Srtar Freq.	End Freq.	Video Carrier	Central Freq.		Channel	Srtar Freq.	End Freq.	Video Carrier	Central Freq.
Band III	5	174 MHz	181 MHz	175,25 MHz	177,50 MHz	Band IV	21	470 MHz	478 MHz	471 MHz	474 MHz	Band V	38	606 MHz	614 MHz	607 MHz	610 MHz
	6	181 MHz	188 MHz	182,25 MHz	184,50 MHz		22	478 MHz	486 MHz	479 MHz	482 MHz		39	614 MHz	622 MHz	615 MHz	618 MHz
	7	188 MHz	195 MHz	189,25 MHz	191,50 MHz		23	486 MHz	494 MHz	487 MHz	490 MHz		40	622 MHz	630 MHz	623 MHz	626 MHz
	8	195 MHz	202 MHz	196,25 MHz	198,50 MHz		24	494 MHz	502 MHz	495 MHz	498 MHz		41	630 MHz	638 MHz	631 MHz	634 MHz
	9	202 MHz	209 MHz	203,25 MHz	205,50 MHz		25	502 MHz	510 MHz	503 MHz	506 MHz		42	638 MHz	646 MHz	639 MHz	642 MHz
	10	209 MHz	216 MHz	210,25 MHz	212,50 MHz		26	510 MHz	518 MHz	511 MHz	514 MHz		43	646 MHz	654 MHz	647 MHz	650 MHz
	11	216 MHz	223 MHz	217,25 MHz	219,50 MHz		27	518 MHz	526 MHz	519 MHz	522 MHz		44	654 MHz	662 MHz	655 MHz	658 MHz
12	223 MHz	230 MHz	224,25 MHz	226,50 MHz	28		526 MHz	534 MHz	527 MHz	530 MHz	45		662 MHz	670 MHz	663 MHz	666 MHz	
					29		534 MHz	542 MHz	535 MHz	538 MHz	46		670 MHz	678 MHz	671 MHz	674 MHz	
					30		542 MHz	550 MHz	543 MHz	546 MHz	47		678 MHz	686 MHz	679 MHz	682 MHz	
					31		550 MHz	558 MHz	551 MHz	554 MHz	48		686 MHz	694 MHz	687 MHz	690 MHz	
					32		558 MHz	566 MHz	559 MHz	562 MHz	49		694 MHz	702 MHz	695 MHz	698 MHz	
					33	566 MHz	574 MHz	567 MHz	570 MHz	50	702 MHz		710 MHz	703 MHz	706 MHz		
					34	574 MHz	582 MHz	575 MHz	578 MHz	51	710 MHz		718 MHz	711 MHz	714 MHz		
					35	582 MHz	590 MHz	583 MHz	586 MHz	52	718 MHz		726 MHz	719 MHz	722 MHz		
					36	590 MHz	598 MHz	591 MHz	594 MHz	53	726 MHz		734 MHz	727 MHz	730 MHz		
					37	598 MHz	606 MHz	599 MHz	602 MHz	54	734 MHz		742 MHz	735 MHz	738 MHz		
										55	742 MHz		750 MHz	743 MHz	746 MHz		
										56	750 MHz		758 MHz	751 MHz	754 MHz		
										57	758 MHz		766 MHz	759 MHz	762 MHz		
										58	766 MHz		774 MHz	767 MHz	770 MHz		
										59	774 MHz		782 MHz	775 MHz	778 MHz		
										60	782 MHz		790 MHz	783 MHz	786 MHz		
										61	790 MHz		798 MHz	791 MHz	794 MHz		
										62	798 MHz		806 MHz	799 MHz	802 MHz		
										63	806 MHz		814 MHz	807 MHz	810 MHz		
										64	814 MHz		822 MHz	815 MHz	818 MHz		
										65	822 MHz		830 MHz	823 MHz	826 MHz		
										66	830 MHz		838 MHz	831 MHz	834 MHz		
										67	838 MHz		846 MHz	839 MHz	842 MHz		
										68	846 MHz		854 MHz	847 MHz	850 MHz		
										69	854 MHz		862 MHz	855 MHz	858 MHz		

Band III. 7MHz Bandwith  
Band IV - V. 8MHz Bandwith

- ES Tabla de canales y frecuencias (Standard B/G)
- FR Tableau de canaux et fréquences (Standard B/G)
- IT Tabella frequenze e canali (Standard B/G)
- PT Tabela de canais e frequências (Standard B/G)
- EN Frequency and channels table (Standard B/G)



EKSELANS BY ITS



**Ekselans by ITS** is a registered trademark of  
ITS Partner (O.B.S.) S.L.  
Av. Corts Catalanes 9-11  
08173 Sant Cugat del Vallès (Barcelona)  
[www.ekselansbyits.com](http://www.ekselansbyits.com)